

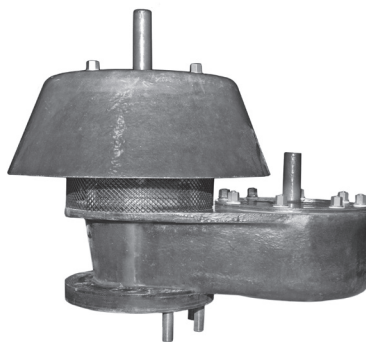
94060 FRP Conservation Vent

The Shand & Jurs model 94060 Conservation Vent is constructed of Fiberglass Reinforced Plastic (FRP). It has been designed for superior corrosion resistance in oxidizing environments. The 94060 is ideally suited for a variety of tank storage and product conservation applications. It is applicable for the chemical, petroleum, petrochemical and waste treatment industries. This conservation vent can be utilized at the end of the line allowing vapors to escape into the atmosphere. An optional closed vent design is available to pipe-away hazardous vapors not allowed to be readily released. The 94060 is available in following configurations: (1) pressure/vacuum (OPEN), (2) pressure/vacuum with pipe-away (CLOSED), (3) pressure only (open or closed) and (4) vacuum only (VACUUM). Its method of operation allows pallets in the vent housing to open and close permitting the vacuum or pressure relief necessary to remain within permissible settings thus avoiding damage to the tanks.

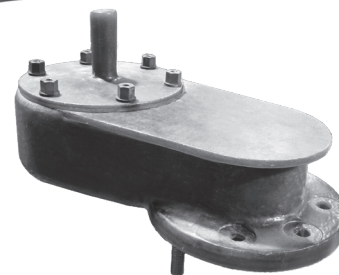
The weights are resin-coated lead. Available in 2" through 24" sizes with standard ANSI 125/150 lb or EN1092-1 PN10/16 flanges.

Construction options such as encapsulated weights and extra corrosion barriers allow for use in extremely corrosive environments such as 36% HCL.

The 94060 is easy to install and is completely compatible with existing pipes, vents and tank fittings. Its low initial cost and ease of maintenance make the FRP Conservation Vent an attractive alternative to Stainless Steel, Hastelloy and Monel construction.



Open Pressure/
Vacuum Vent



Vacuum Only

Features

- One piece construction prevents product leakage
- Self Draining Housing prohibits condensate from seating surface
- Simple installation & maintenance
- Vent protection from freezing, binding and clogging
- Optional pipe-away relieves vapors through a flanged connection
- 470 Derakane standard, 411 Derakane and Furan available

Specifications:

Sizes:

2", 3", 4", 6", 8", 10" & 12"
(16", 20", 24" Pressure only)

Standard Pressure & Vacuum Setting:

1/2 oz./in.²

Maximum Pressure Settings:

8 oz./in.² (Higher set points available, C.F.)

Maximum Vacuum Settings:

8 oz./in.² (Higher set points available, C.F.)

Flange:

To match drilling of ANSI 125/150 lb., EN1092-1
PN10/16, API 650 flat face.

Materials of Construction:

Body:

Fiberglass and choice of vinyl ester resins 411 or 470
Derakane. Furan also available.

Weights:

Resin-coated steel or lead. FRP Encapsulated steel
or lead option.

External Hardware:

316 S.S. (Hastelloy "C" Optional)

Internal Stem & Guides:

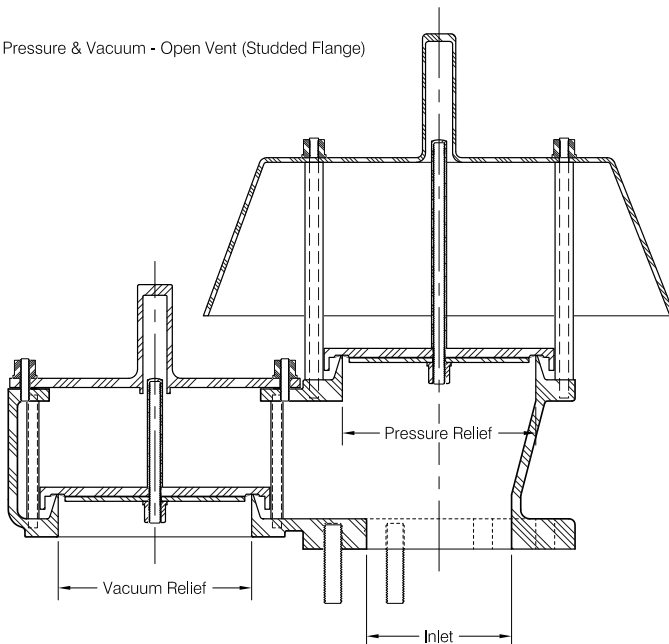
Same material as body

Diaphragm:

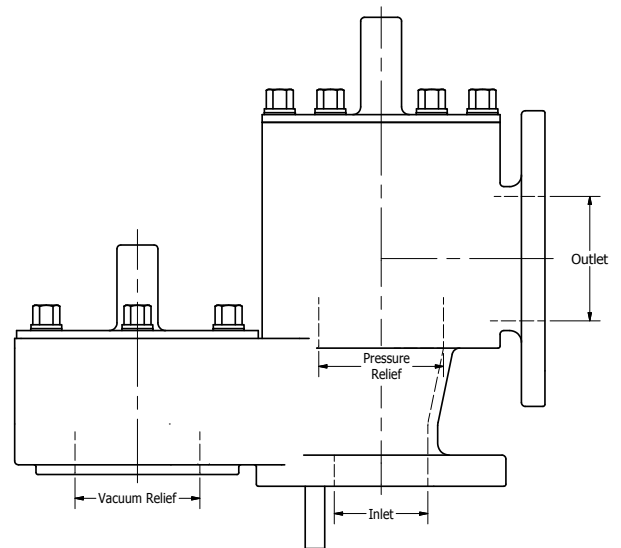
FEP Teflon

Vent Types:

Pressure & Vacuum - Open Vent (Studded Flange)



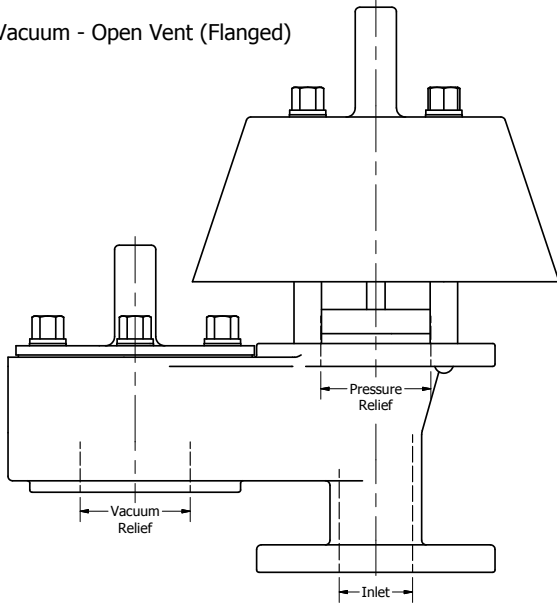
Pressure & Vacuum - Closed Vent (Studded Flange)



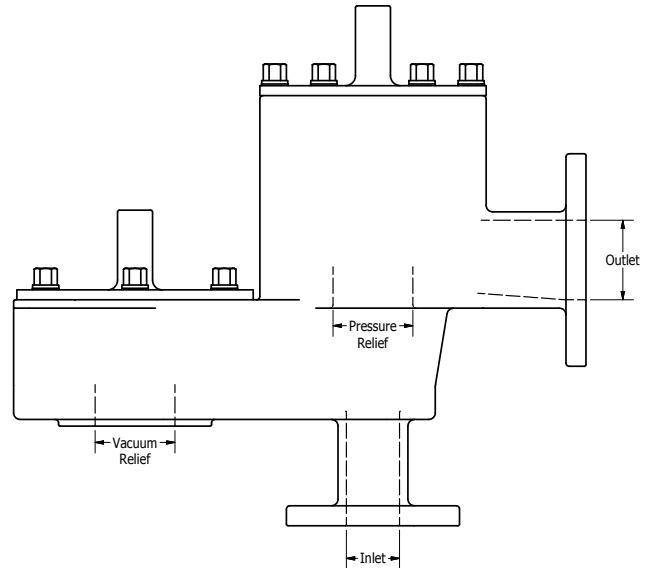
All designs subject to change. Certified dimensions and specifications available upon request.

Vent Types:

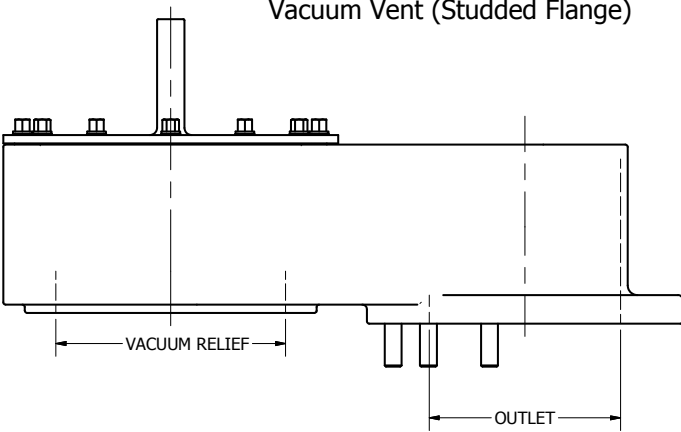
Pressure & Vacuum - Open Vent (Flanged)



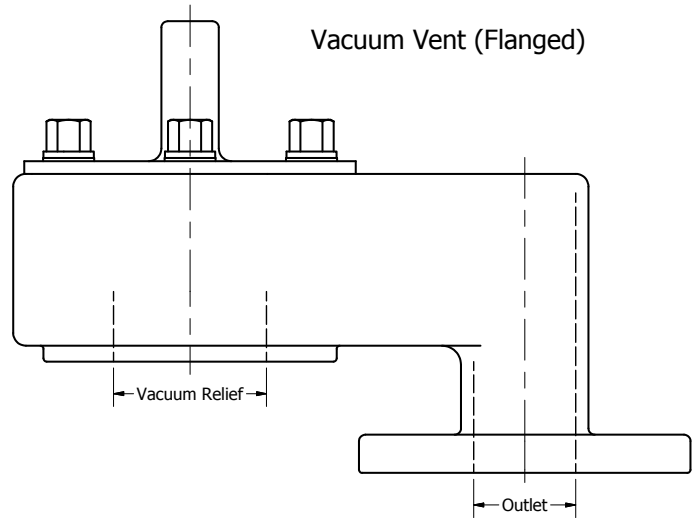
Pressure & Vacuum - Closed Vent (Flanged)



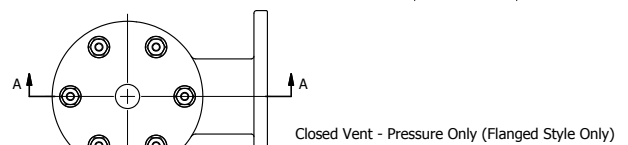
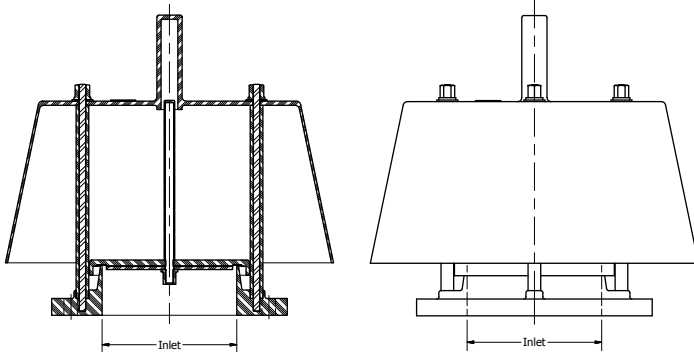
Vacuum Vent (Studded Flange)



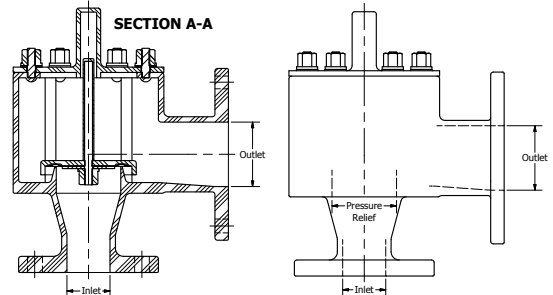
Vacuum Vent (Flanged)



Open Vent - Pressure Only (Flanged Style Only)



SECTION A-A



94060 Ordering Guide

Model Number Selection

The model number will consist of a base number **94060** followed by 6 digit numbers. These digits will represent 5 sets of option tables.

94060 - AB - CD - EF

Ordering Information

Specify:

1. Model 94060 Fiberglass Reinforced Plastic Conservation Vent
2. Type of Size
3. Type of Pressure and Vacuum Setting
4. Temperature Range
5. Flange Type
6. To Specify CE for Ordinary EU Locations order as 94060CAB-CD-EF.

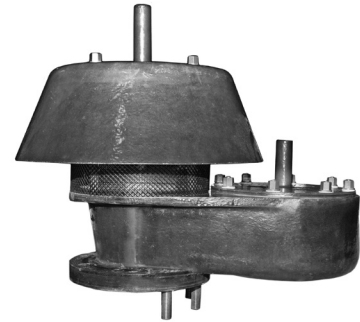


Table AB - Size

Option AB	Inches
02	2"
03	3"
04	4"
06	6"
08	8"
10	10"
12	12"
*16	16"
*20	20"
*24	24"

*For pressure only style - Consult Factory.

Table C - Weights / Hardware

Option C	Description
0	Standard Weights & Hardware
1	Reserved
2	Standard Weights/Hastelloy C Studs
3	Standard Weights/Hastelloy C Studs/Nuts
4	*Encapsulated Weights/Standard HW
5	Encapsulated Weights/Hastelloy C Studs
6	Encapsulated Weights/Hastelloy C Studs/Nuts

*If greater standard set point, Consult Factory.

Table D - Construction

Option D	Description
1	411 Derakane
2	470 Derakane
3	Furan
4	411 Derakane with Extra Corrosion Barriers
5	470 Derakane with Extra Corrosion Barriers
6	Furan with Extra Corrosion Barriers

Table E - Flange Type (Flat Face Only)

Option E	Description
0*	ANSI 125/150 lb.
1*	EN1092-1 PN16
2*	EN1092-1 PN10
3	API 650 (20" & 24" Sizes Only)
4**	ANSI 125/150 lb.
5**	EN1092-1 PN16
6**	EN1092-1 PN10

* Options (E) 0, 1, 2 are studded flange (2"-12" Only).

** Options (E) 4, 5, 6 are flange through hole.

Table F - Vent Type

Option F	Description
1	Open, Pressure & Vacuum
2	Closed, Pressure & Vacuum
3	Vacuum Only
4	Open, Pressure Only
5	Closed, Pressure & Vacuum, Same Size Inlet and Outlet
6	Closed, Pressure Only
7	Closed, Pressure Only, Same Size Inlet and Outlet

Pressure Setting: 1/2 Oz. Inch² (Standard)

Maximum Pressure:

8 Oz. Inch² for 2-16" Sizes;

4 Oz. Inch² for 20" & 24" Sizes

(Higher set points available, consult factory)

Maximum Vacuum:

8 Oz. Inch² (Higher set points available, C.F.)